

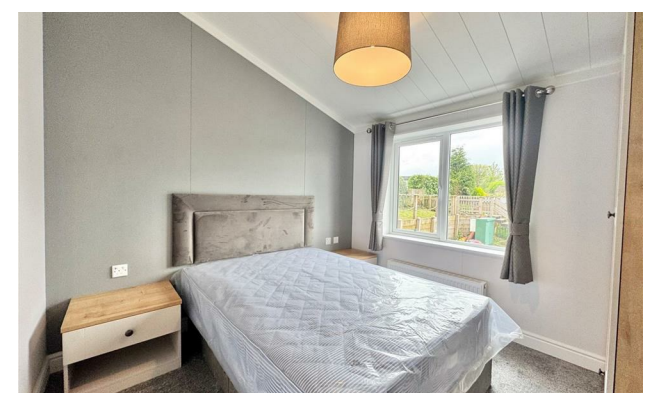
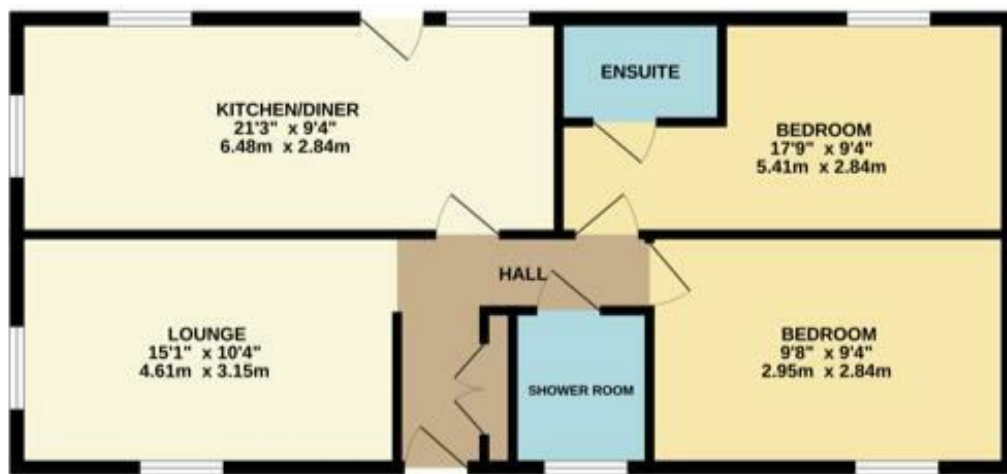


**Jordan fishwick**

1 OAK ROAD LINDOW COURT PARK MOBBERLEY WA16 7DP  
Guide Price £240,000

## 1 OAK ROAD LINDOW COURT PARK MOBBERLEY WA16 7DP

Take a look at this brand new park home for the Over-45's, ideally positioned in a highly sought after semi rural location. Internally, the property offers two well proportioned bedrooms, a generous open-plan dining and kitchen area, well proportioned lounge and a stylish three-piece shower room suite as well as the master bedroom benefiting from its own en-suite. The spacious kitchen/diner is both attractive and practical, featuring a range of modern matching wall and base units alongside integrated appliances. Both bedrooms benefit from built-in wardrobes, providing excellent additional storage space. Externally, the home enjoys an enclosed fenced perimeter and a paved pathway, creating a private and low maintenance outdoor space. Must view!



- Brand-New Park Home
- Two Bedrooms
- Two Shower Rooms
- Semi-Rural Location
- Lindow Court Park
- Must View